

Fixed bollards M50

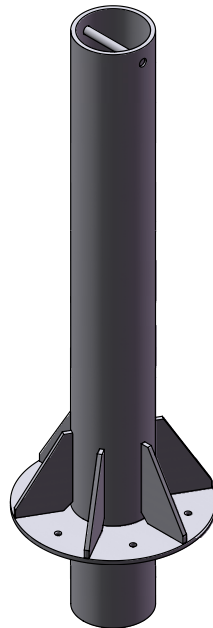
Deep mount

FB275/M50-1000



Product description		
Fixed bollards ST	FB275/M50 1200 mm	
Height	1000 mm	
Diameter	273 mm	
Material thickness	23 mm	
Fixed cylinder	Material	Steel S355JR Stainless steel (AISI 304) /(AISI 316)
	Surface treatment	Steel version: anti-corrosion treatment – standard painting * Stainless steel version: replaceable sleeve, standard painting * or brushed
	Reflecting strips (height 55 mm)	Yes
Impact energy without destruction - impact resistance	700,000 J	
Impact energy with destruction - breakout resistance	2,000,000 J	
Connecting lead for LED lighting strips (optional)	Standard 10 m (max. 80 m)	
Certified acc. to	ASTM F2656-20 M50 P2	-

* For orders with no surcharge in RAL to choose, the standard colour is Anthracite grey.



Fixed bollards M50

Deep mount

FB275/M50-1000



Fixed bollards FB275/M50-1000		FB275/M50-1000 Article no.
Fixed bollards FB275/M50-1000	Steel painted	PZ727023
	Replaceable sleeve stainless steel painted	PZ730023
	Replaceable sleeve stainless steel brushed	PZ733023
Fixed bollards FB275/M50-1000 + Standard cylinder cover (head) with lighting strips with 25 LEDs	Steel painted	PZ728023
	Replaceable sleeve stainless steel painted	PZ731023
	Replaceable sleeve stainless steel brushed	PZ734023

Optional extras for fixed bollards	Article no.
Rebar cage for FB275/M50-1000	AN990134
Surcharge for painting in RAL color	AN900871
Surcharge for sleeve version in brushed stainless steel (AISI 316)	AN108731
Protection against corrosion - galvanized	AN101841
LED lighting strip power supply	AN107341
LED lighting strip line extensions (80 m max.) supplied in 5 m increments Per m	AN107551